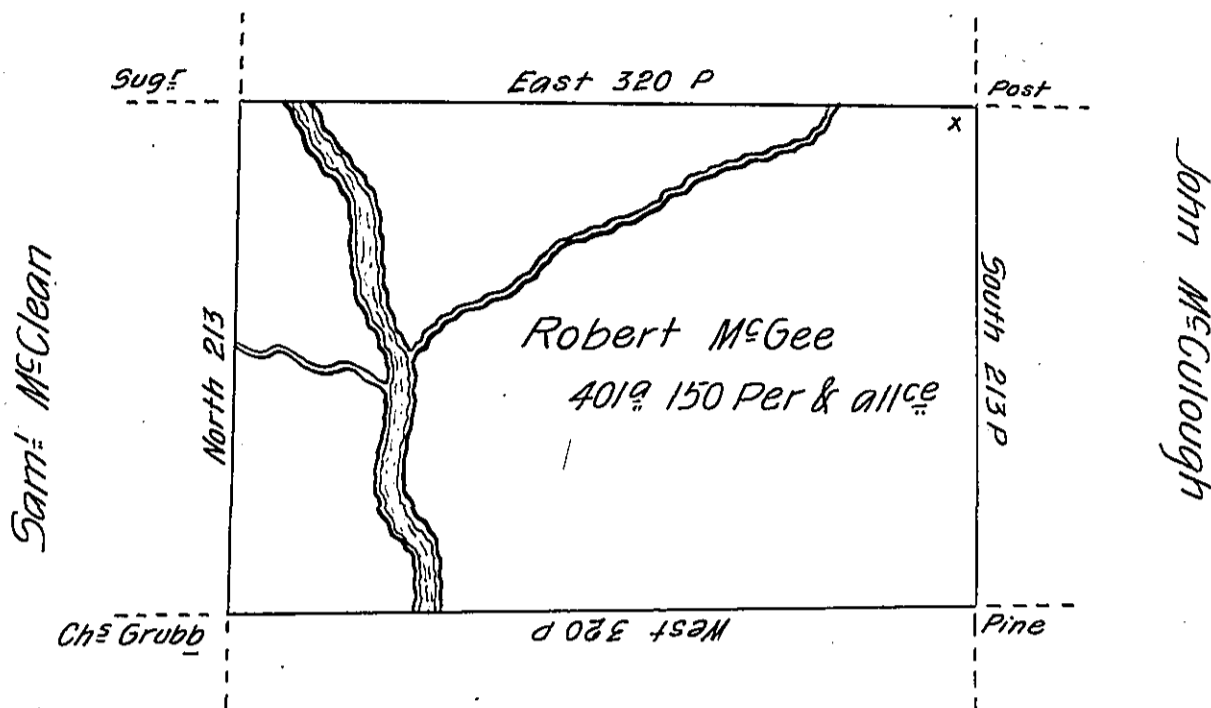


James McGrea.



Joseph McGuffin

Situate on the West side of French Creek in Allegheny County
 Containing 401 acres and 150 P & allowance of Six Per Cent for Roads &c.
 Surveyed the 1st day of June 1795. In Pursuance of a Warrant dated the
 30th day of May 1792.

W^m Power Dy. S^t

To Daniel Brodhead Esq^r
 Surveyor General.

IN TESTIMONY that the above is a copy of the original remaining on file in
 the Department of Internal Affairs of Pennsylvania, made
 conformably to an Act of Assembly approved the 16th day of
 February, 1833, I have hereunto set my Hand and caused
 the Seal of said Department to be affixed at Harrisburg,
 this twenty first day of December 1905.

Wm. Power
 Secretary of Internal Affairs.